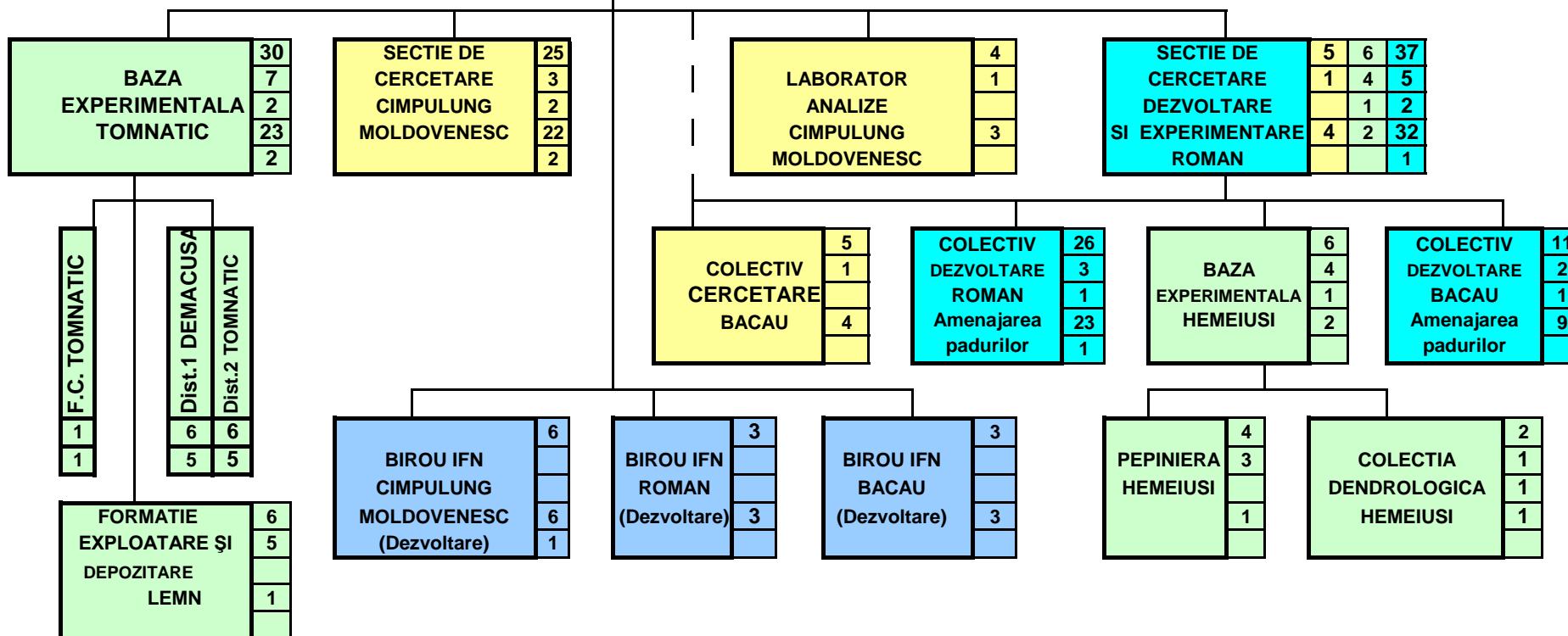


<b>TOTAL</b>
Muncitori
din care : indirect prod
TESA
din care : conducere

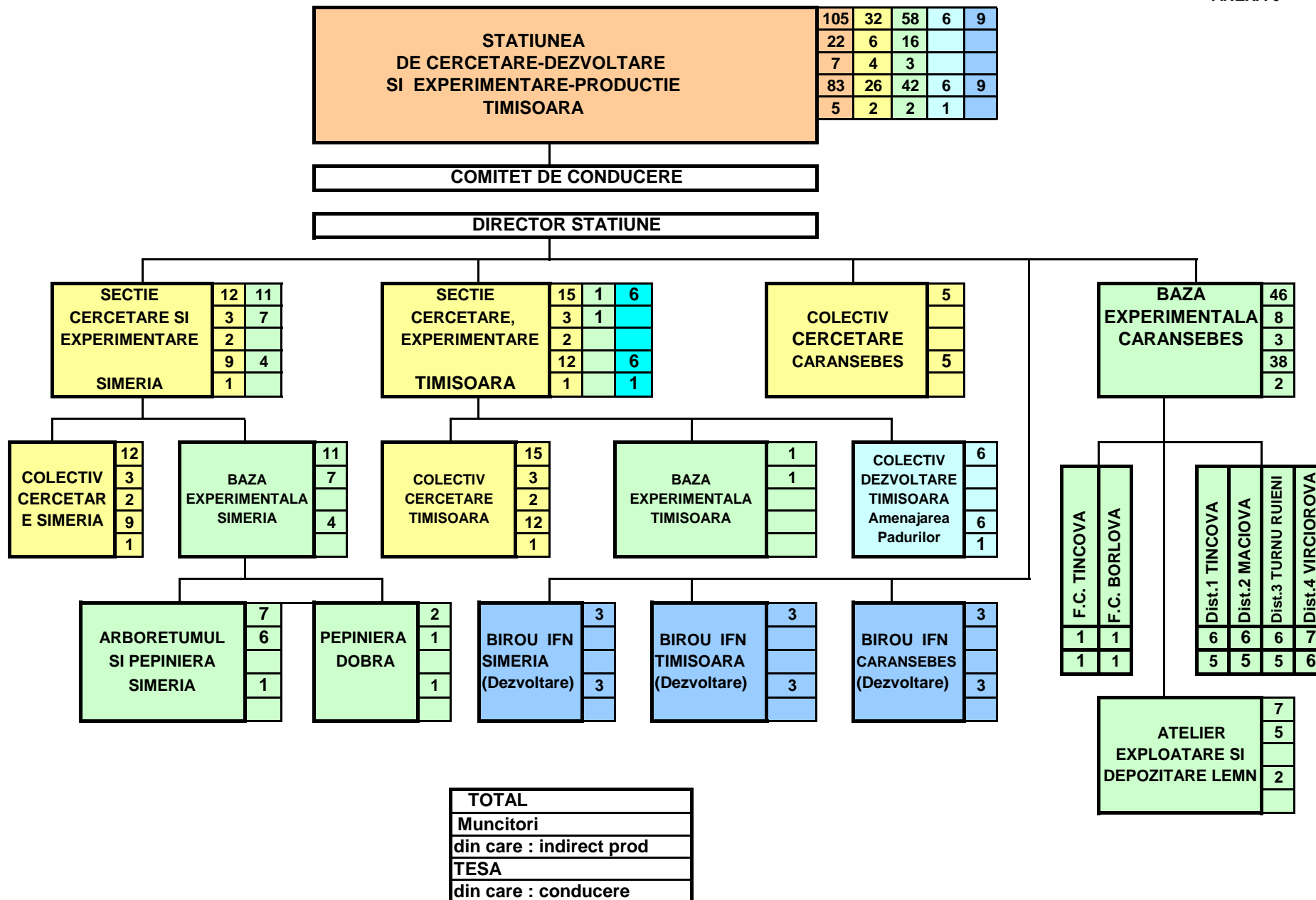
STATIUNEA DE CERCETARE-DEZVOLTARE SI EXPERIMENTARE-PRODUCTIE CIMPULUNG MOLDOVENESC	119	34	36	37	12
	21	5	11	5	
	7	2	3	2	
	98	29	25	32	12
	6	2	2	1	1

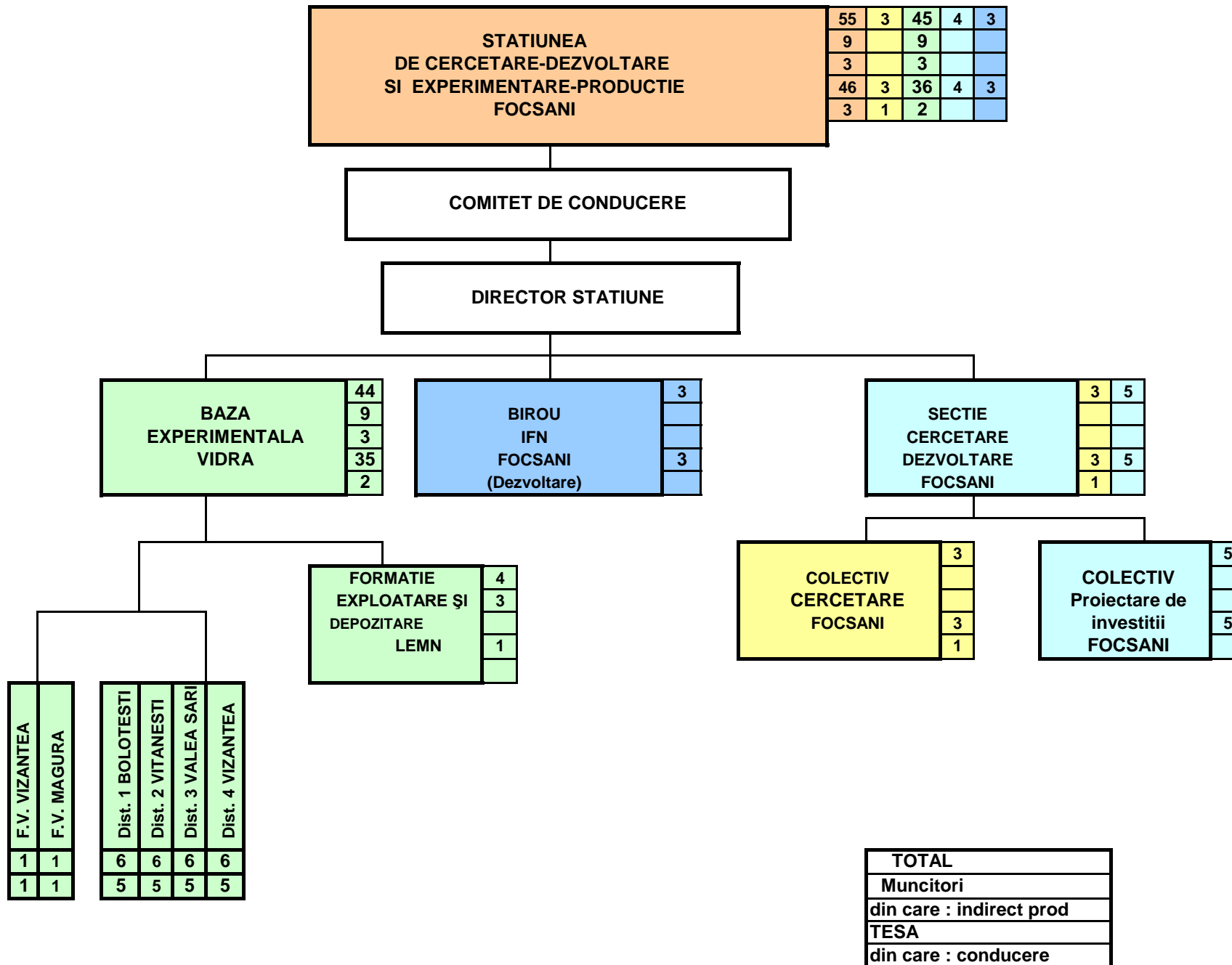
COMITET DE CONDUCERE

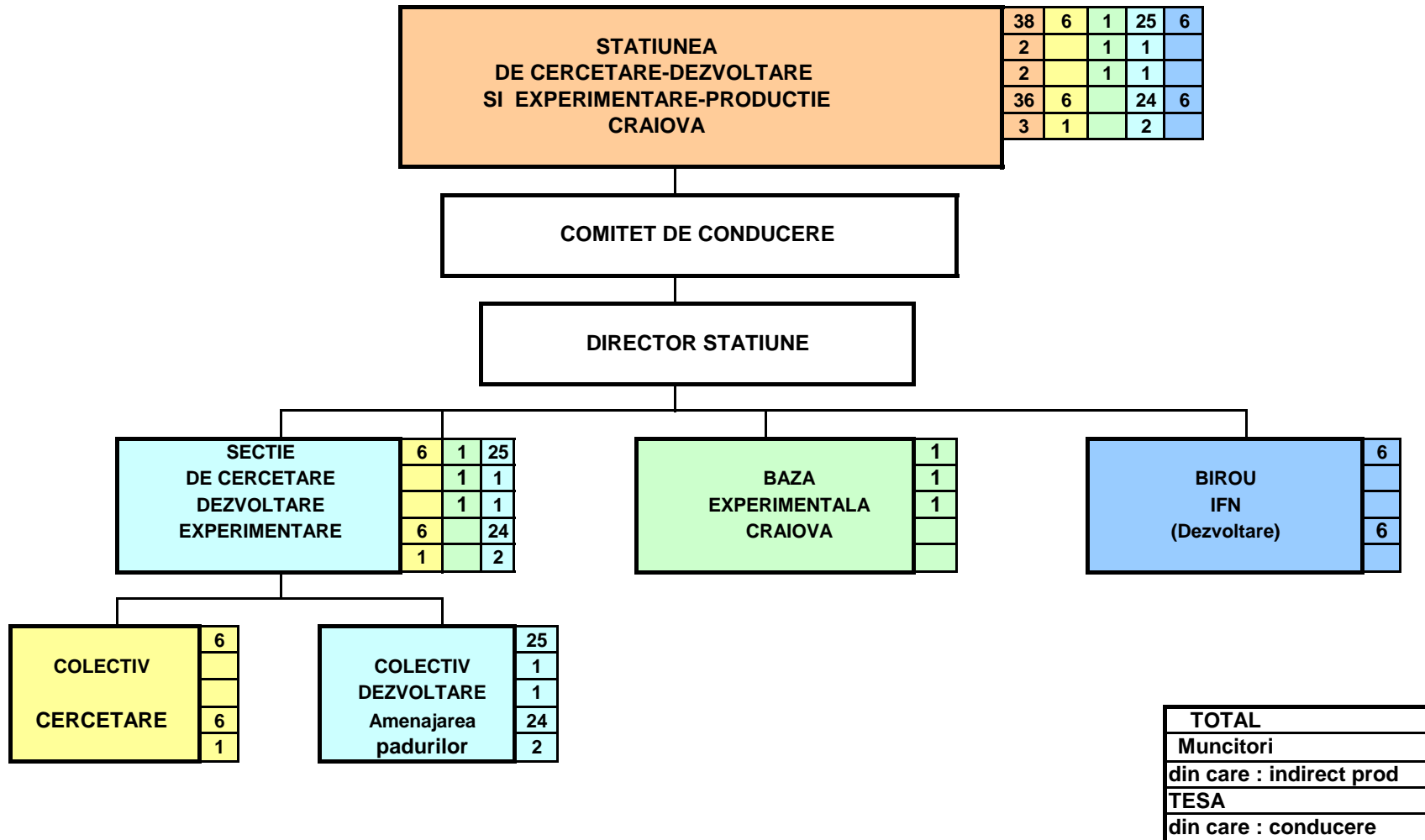
DIRECTOR SECTIE

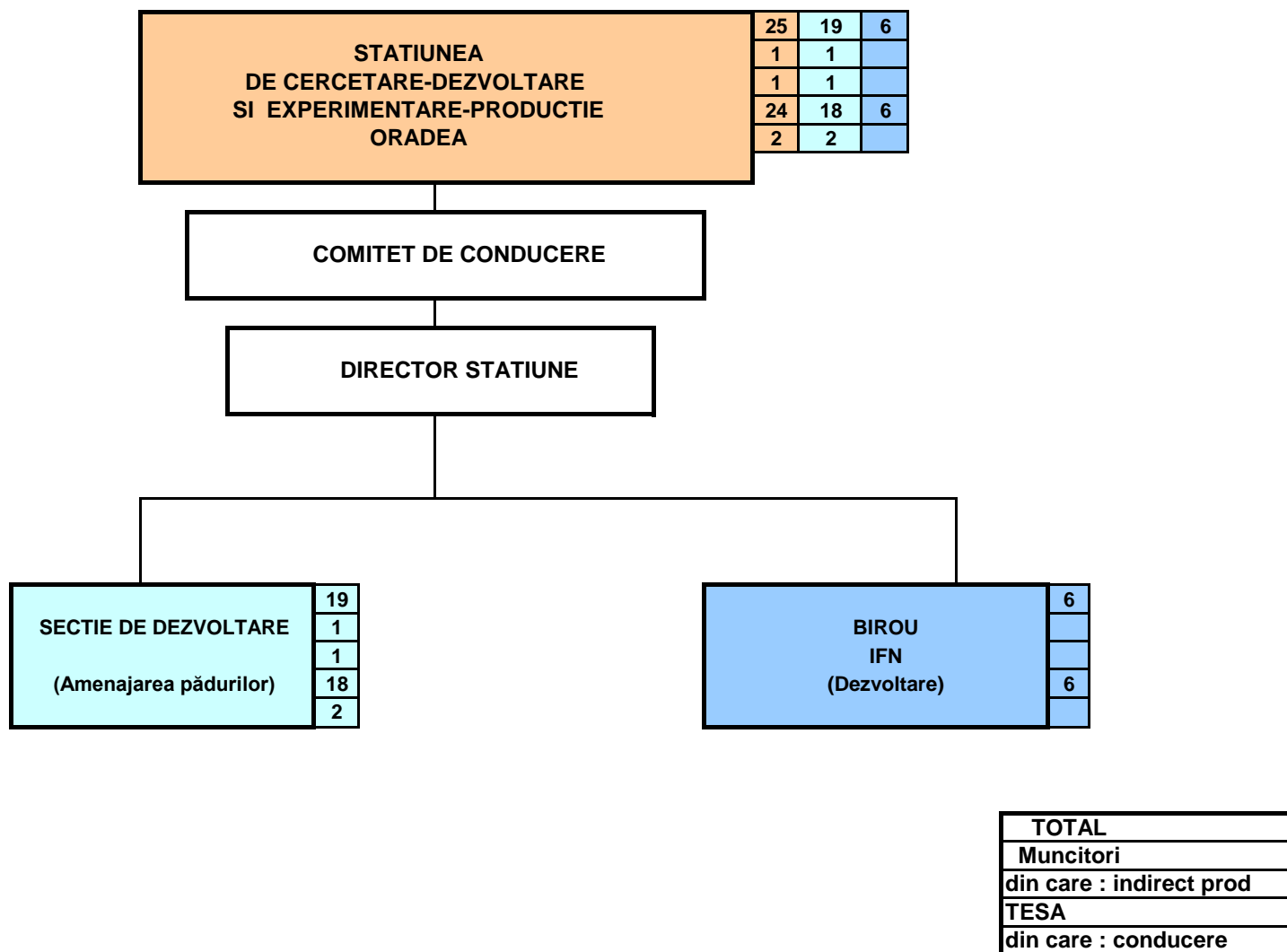


<b>TOTAL</b>
Muncitori
din care : indirect prod
TESA
din care : conducere

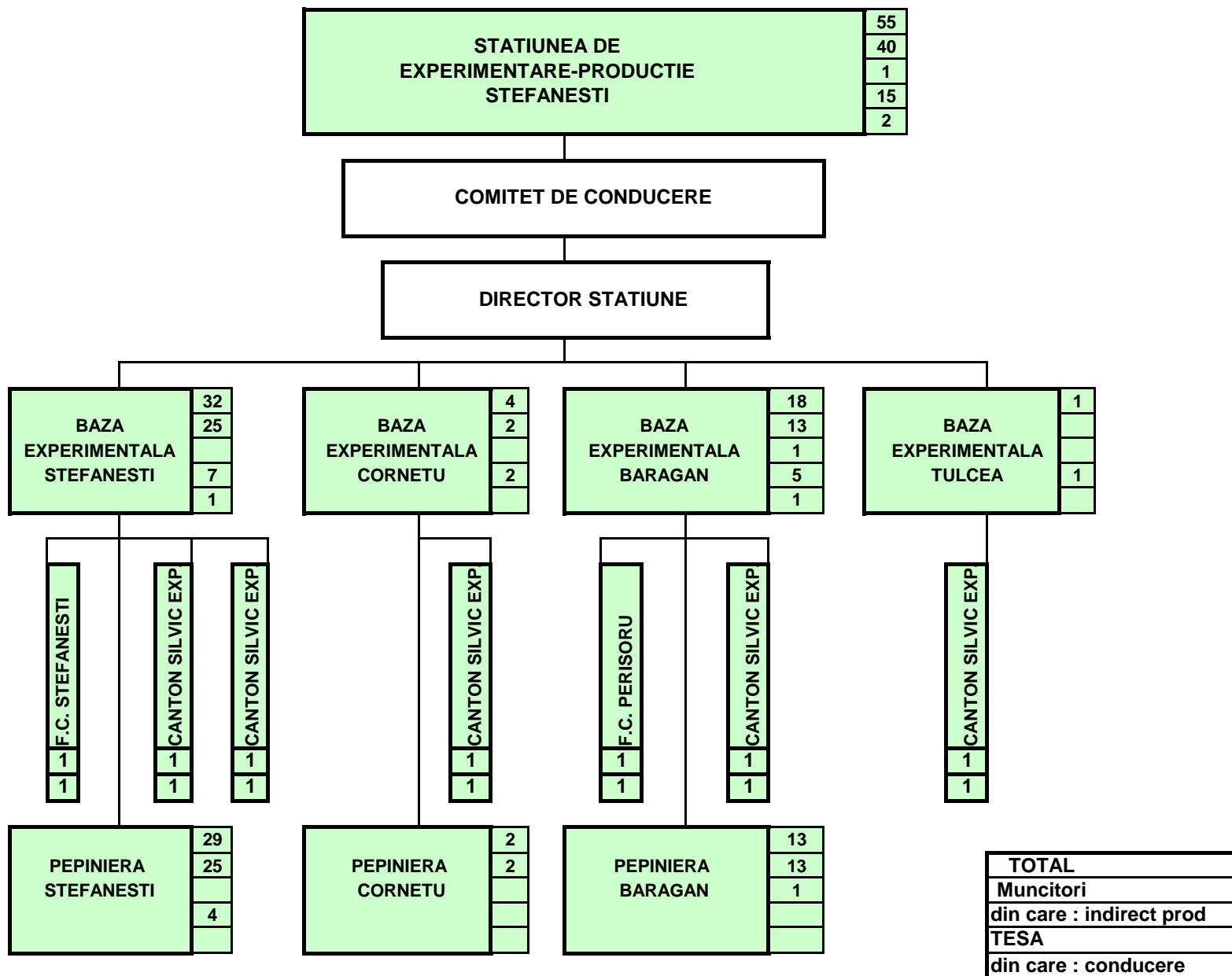












<b>TOTAL</b>
Muncitori
din care : indirect prod
TESA
din care : conducere

Nota : Atributiile Comitetului de conducere al Statiunii Stefanesti vor fi exercitate de Comitetul de directie al INCDS "Marin Dracea"